

Barbara Beamer
RMHA Vice President 2012



Over the past 25 years the RMHA has benefited from visionary leadership that turned dreams into reality – from a farm work horse little known outside Kentucky to a recognized breed, to an international horse association. Now it is time to ask two strategic questions:

1. What are our visions for the next 25 years?
2. How can we come together to accomplish them for our great Rocky Mountain horses?

It a privilege to run for RMHA Vice President, serve our members, and participate in the continued growth of our association. While we've seen many changes in the horse industry, as well as within our association, I deeply believe that our Board and our association have the desire and ability to be good stewards of this incredible breed. With an optimistic, forward-looking and respectful viewpoint, I will strive to continue moving the association forward as a premier organization.

A wide range of business and volunteer experience will serve me well as vice-president. We have owned, bred, and sold Rockies for 15 years. As a businessperson, I've honed the skills and understanding needed to successfully address current and future challenges. Over the years as a RMHA volunteer I have gained in-depth knowledge of the RMHA through service as Board Member-at-Large and on the Marketing, Registry, Genetics, and Nominating Committees. My work as Chair of Marketing included a major redesign of the RMHA website and the identification / hiring of a new graphic designer for the RMHA magazine and local printer for the magazine.

As Vice-President my goals are to:

1. Diligently uphold the RMHA By-Laws and Rules in order to preserve the Rocky Mountain Horse;
2. Oversee fair and open proceedings as the presiding officer of the Hearing Panel;
3. Ensure the Board's fiscal responsibility to develop a balanced budget so we don't need to "dip" into emergency reserve savings to fund routine expenses;
4. Reevaluate our goals to meet today's needs. Our members and horses are scattered across the country and globe, and yet we have few board members from, or programs operating, outside the Tri-State area. To better ensure the Rocky Mountain horse's future, we need to better serve our entire membership.

No matter where you live, it is important to share your vision for our horse and association so we can work together to accomplish great things. Please do not hesitate to call me at 937-783-2908 or by email: beamsridgej@hughes.net.

I respectfully ask for your vote and thank you for your support.

Barbara Beamer

Millard Buchanan, Director of Examiners

To the Members of the Rocky Mountain Horse Association:

I, Millard Buchanan, will be seeking the position of Director of Examiners. I held this position in the past with the RMHA. As one of the first board members to hold this position, I established the guidelines for recruiting and training new examiners. I traveled to many associated clubs of the RMHA and directed Examiner's clinics.

During my 20 years of involvement with the RMHA, I have tried to bring a lot of diverse information to the membership about shoeing and all types of equipment that would relate to training the unique Rocky Mountain Horse. I was one of the first to speak out about establishing the Blood Typing of the horses in our association. I started the Rocky Mountain Horse Futurity and directed it for three years. Currently, I am an Examiner and serve on the Show Advisory Committee.

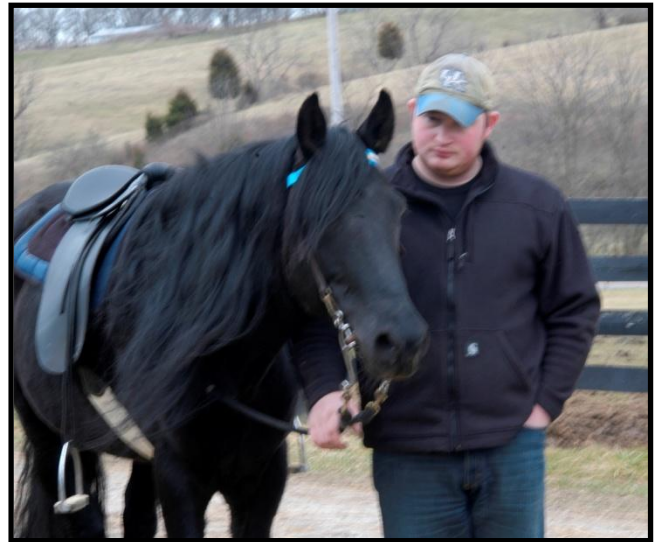
My main concern is to protect the Rocky Mountain Horse and the breed type that is established. This should be the concern of all the members. Preserve, Protect and Promote the GREAT Horse. There are still many things that need our attention and I would like to be part of it.. I would appreciate your support and vote for Director of Examiners.

If you have any questions or concerns, please feel free to contact me at my home in Wilmington, Ohio. Our e-mail address is marymill413@yahoo.com. Our home phone number is 937-382-0251. My cell phone number is 937-725-4177.



Nate Buckler, Member at Large

Hello fellow Rocky Mountain Horse Association members. My name is Nate Buckler, and I am seeking a Member at Large position on the RMHA Board of Directors. My family and I have raised these wonderful horses since 1995 and we currently own 30+ Rocky Mountain Horses. We strive to breed for the best natural horses we can breed. Our bloodlines are old foundation horses and we want to keep the traditions and old blood of the Rocky Mountain Horses alive. We have done this by filling a string of horses directly by Magnum, Woosley's Rocky, Amigo Blue, Nuncio, Nick, Johnson's Toby, Cocoa Caliente and Blue Smokin' Sambo.



Nate Buckler Pictured with Tar Mack

I am employed by the United States Department of Agriculture, working in the Farm Service Agency. I coach Youth Basketball. I am a member of the New Castle Lions Club, and serve on the Henry County Fair Board. Formerly, I am a four year member of the Henry County FFA, where I became familiar with Roberts Rules of Order and Parliamentary Procedure.

I chose to run for the position of Member at Large because I feel like it is the main responsibility of that position to represent the voice of the RMHA membership. I have felt the frustrations of not having emails and phone calls returned by board members. This has lead me to wonder if those board members simply do not care about my concerns, requests, and inquiries about OUR association. I want to hear from the membership. I want to know what you have to say, and I want to represent you to the best of my abilities. I would also like to find more ways to get the membership involved. Avenues that would bring the entire membership together - not just certain demographics.

When you receive your ballot I would greatly appreciate your vote. If you have any questions, suggestions, or just simply want to talk horses - don't hesitate to contact me.

Thank You,

Nate Buckler
RMHA Member at Large Candidate
(502) 220-6560
horse_heaven_farm@hotmail.com

Suzie Clarke, President



Dear Members:

My name is Suzanne Clarke and I have been a Rocky Mountain Horse Association member since 2003. I have served as President of the Tri Sate Rocky Mountain Horse Club and currently, I serve as a Hearing Panel member and Chairperson of the RMHA Show Advisory Committee. I am also an examiner. I believe that my experience serving in different capacities of the RMHA gives me a balanced viewpoint to issues facing the RMHA. My utmost responsibility is to protect our beloved horse.

The current board has been responsible for great advancements in the administrative responsibilities of the association. Our Treasurer is working on a "balanced budget". Our Marketing Committee is developing a National Sponsor Campaign and is looking for better ways to promote our horse. Our Technology Committee has brought us into the Twenty First Century with a

new data base that will allow more information to be passed directly to the membership and allow members to "network" like they have never done before. I truly believe that we have found the qualified and talented people needed to keep this Association moving forward - on our existing programs as well as opening doors to new programs that will take us to the next level of Preserving and Protecting our Rocky Mountain Horse. The next administration will be responsible for continuing the positive changes that have been made to our Association.

I believe that the Association needs to have a vision of greater service and opportunities for both our horse and its membership in the future. During these hard economic times, it is the responsibility of the association to do everything it can to preserve and protect the Rocky Mountain Horse and to also support its members who own these special horses by "giving back " and providing more services and programs in all areas of the association. When changes are progressive and allow our association to grow in ways to help everyone to become involved and to participate (even in small ways), we cannot hinder the process. A board member who is fair and open minded will not be afraid of change. A board that is fair and balanced will always choose what is best for the association.

I can promise that I will do my best to help this board help its members. It would be honor to have the opportunity to serve.

Suzie Clarke
suzieclarke76@gmail.com

Kathy House, Member At Large



Hi, my name is Kathy House and I am running for Member At Large. I worked as a 911 Dispatcher for several years and I have a Paralegal degree from the University of Cincinnati.

I have been a member of the RMHA since 2006 when I bought my first Rocky Mountain from Gerald and Shirley Martin. Our small herd is comprised of four rockies.

I served two terms as Secretary of the Tri-State Club and have just been elected President. I have assisted with the Tri-State Shows as well as worked with the RMHA International Show Committee. Currently, I am the Chairperson of the Membership Committee and serve on the Technology Committee and the International Show Committee. Being on the Membership Committee has allowed me to have contact with people from around the world. I am able to listen to their suggestions and concerns about the association.

I'm very passionate about my Rockies. I researched breeds of horses and found an article about the temperament of the Rocky Mountain Horse. I realized that with my Multiple Sclerosis, it would be the perfect horse for me. As long as I live, I will credit my Rockies for keeping me mobile and out of a wheel chair. When I'm sick and my balance is so bad I have trouble walking, I go to the barn and spend time with my horses. They are therapeutic and if I never ride again, I will always be able to brush them and talk to them and look into their wonderful soulful eyes. I will always be passionate about my horses, and will not go along with anything that will harm them.

I'd like to see the membership get more involved with the Association. I want the horse to be promoted in every way possible and I'd like to see the Association become even more successful at providing services to their members. I have very good communication skills and have a passion for this horse that is unflinching. If elected, I would always be available to hear your concerns and suggestions. I believe it is important to promote membership renewals and each member should have a voice. If elected, I would like to be your voice for the board of the RMHA. Thank you for your consideration, and I would very much appreciate your vote.

Email: klh6d76911@hotmail.com



Dear Members:

My name is Ramona Jackson and I am asking for your support to elect me as Vice-President to the board of the Rocky Mountain Horse Association.

I have been a member since 2002 and have represented the association in the past as a Member-at-Large, Chairperson on the marketing committee, created a co-op advertising opportunity through nationally recognized publications, and served as a committee member for the International Show.

Current leadership has created a strong platform through their "Vision of the Future" by preparing for the existing business climate through exclusive membership offers, improved technology and recognizing the value of promoting our breed through marketing efforts. This current board has enabled our association to weather the economic storm and be positioned to take advantage of opportunities to grow our membership and grow our registry.

It is my belief that an involved membership will be the catalyst in protecting and preserving the Rocky Mountain Horse. It has been said, "it takes a village to raise a child". I believe it takes a membership to protect, preserve and promote the Rocky Mountain Horse. With our common interest, we can use our years of combined experience and talent to continue to position our breed as the horse for all occasions.

I recognize every member matters. Our association should never be divided. Whether you enjoy a long ride on the trail, competing at a show, breeding the next champion or simply enjoying all of the wonderful characteristics of our amazing breed, you are an important component in protecting, preserving and promoting the Rocky Mountain Horse.

It is without any doubt that **"iCan"** make a difference within our association. I have the desire and experience for leading effective and successful teams. Currently, I am an Area Director for a fortune 500 company. I am responsible for growing \$55 million in top line sales while leading a diverse group of people, developing revenue strategies and creating marketing plans to achieve results.

I want to be your vice-president and create opportunities for our association to be first in class. **"iCan"** create membership growth and grow the registry through the engagement of all members while we all protect, preserve and promote our wonderful Rocky Mountain Horse.

Please call me with any questions and vote: Ramona Jackson for Vice-President.

Ramona Jackson
The candidate for Vice-President

iCan
Can you?

cell (910) 977-0521

rjacksonhorse@aol.com

Jackson Farm and Stables

Fayetteville, North Carolina

Sylvandell Farms

254 Sylvandell Road, Cynthiana KY 41031-8460

Home/Fax: 859-235-8950; Cell: 859-588-3394

E-mail: pmkleinky@earthlink.net



I am Paulette Klein and I am the current Secretary of the Rocky Mountain Horse Association. With the upcoming 2012 RMHA elections, I am seeking your support to stay on the Board of Directors as Secretary.

In 2004, I acquired my first three yearling Rockies and since then I've been a proud member of the Association. From 2004 through 2011, I was a breeder of this wonderful and very beautiful horse! Mentors and friends, Morgan and Doris Riggs, started me on this path but because of health concerns, I no longer breed. However, I continue to work my horses on obstacles and train them for trail.

My secretarial and office experience started immediately after graduating high school. I went to work two years in the mission field for the Precious Blood Missionaries in Chile. When I returned to the U.S., I worked for several corporations in accounting and personnel management. When I joined the Air Force in 1975, my training continued ~ in administration, logistics, resource/information management, public affairs, transportation and command/control. In 1997, I retired from the military.

I've been active in the Association since joining. In the show arena, I enjoyed showing in hand and under saddle for seven years. And I know how much work shows entail - I conducted a memorial show for Morgan Riggs in 2008. Because I didn't know a darn thing about how to put on a show, I wrote three checklists to help new show managers conduct pre-, during & post- show day activities. I competed in RMHA Trail Obstacle Competitions for three years and encouraged three people to join the RMHA to compete.

Two years ago, I attended the Judges Clinic but elected not to be a judge. I am currently an Examiner and have been one for seven years. On the board, I was a Member-at-Large for two years and have been secretary for two. During my term, I enhanced numerous forms/booklets for the RMHA which are available on the web. I was also on the Show Advisory Committee for three years and consolidated, standardized and edited the 2010 Show Rules book.

As the Association progresses in updating communications, technology and membership services, I would be honored to continue as your Secretary and Chair of the Registry Committee. Thank you for your kind support.

RMHA Members,

My Name is O'Neill Lawrence; I am seeking a position for Member at Large. My wife Pam & I have been members of the RMHA since 2009. We purchased our first Rocky MT Mare in the fall of 2008.

In 2009 I was asked to Judge the Rocky Mt Rated Trail Program. In 2010 I was co-director of the Rated Trail Program and become director in 2011. In the past 3 years I have been an active member in the RMHA and have purchased 3 more mares and a young 3 year colt. Horses have always been a part of my life from riding ponies when I was a kid to training for trail/obstacle horses of all breeds, but the Rocky Mt Horse has made a lasting Impression on me. I am a true believer in this breed.

With 28 years of experience in construction and construction Management, I know the importance of listening, planning and working together to accomplish goals, staying organized and growing the business. After retiring from construction management, I now work full time with horses as a Certified Natural Hoof Care Practitioner and Trainer. In the last 3 years while traveling for work and trail riding,

It amazes me how many people have never heard or seen a Rocky Mt Horse. We are always approached from someone wanting to know what kind of horse is that. It is obvious that there needs to be more done to promote the breed out on the trail.

If elected I would stay focused on the things it takes to have a great Association.....

- Listening to members concerns
- Getting more members involved
- Being the members voice
- Preserve and promoting the breed
- Setting goals and make plans to accomplish them
- Work together with other members/ board members for what is best for the horse
- Stay organized
- Promote the youth

Thank you for considering me as your candidate for member at large.

O'Neill Lawrence

270-999-4485



Lyngle Lawson

Stoner Ridge Farm

2469 Clintonville Rd., Paris, KY 40361

Cell: 859.749.1586 ~ Home: 859.988.9092

E-mail: sales@stonerridgefarm.com



Fellow members, my name is Lyngle Lawson, and I seek your support in my bid for election as Secretary of the RMHA. My family and I were involved with these wonderful horses before they were ever known as a breed. They are treasured threads woven through our lives, the lives of our children, and now through the lives of our grandchildren. When we began to build our herd, I never imagined that horses would shape our lives as they have. Our days are now filled with riding, training, and teaching others about this great breed.

When Robert and I first married, I worked as a secretary and later established my own day care business. As far as formal education goes, I didn't begin my college career until I was a 30 year old mom with two children. It was about this time, we got our first Rocky for the girls to ride. We had a blast! I worked hard in school and graduated summa cum laude from Eastern Kentucky University with a master's degree in Elementary Education and a Rank I in Educational Administration. Now I am a second grade teacher. I also serve on our school's writing committee. I enjoy writing and have published several articles in magazines and newspapers about our horses and the experiences we've had. In addition, my husband and I own Stoner Ridge Farm, an equestrian training facility, where horses and people are learning every day. Robert and Charlie (our son-in-law) ride. Erin (our daughter) gives lessons, and I take care of the bookkeeping, payroll, and secretarial duties. It is truly a family affair.

Currently I am glad to serve the Association as a member of the International Show Committee. I have also been on the Nominating Committee. My husband and I frequently assist with the RMH youth clinics teaching our young people skills and horsemanship. As RMHA members over the last twenty years, there have been many opportunities to help. Back in 1996, I became the president of the Rocky Mountain Drill Team where I served for over eight years. We traveled to breed fairs to promote the RMH in a dynamic musical review that always excited the crowd. Organization was paramount in transporting twelve horses and seventeen people. An accurate budget supported by fund raising was critical to our promotion of the horse. During this time, I also served on the RMHA Show Committee at the height of the show circuit.

Today as a teacher, parent, and grandparent, I recognize the importance of building a solid foundation for our youth and passing on to them the torch of responsibility that will be the future of our Association. In addition, I encourage additional support for the membership by developing resources to help them gain knowledge about the preservation, promotion, and natural development of the Rocky Mountain Horse. Increased communication, equal access to information, educational support, and continuing our technological advancements are critical.

While I have the skill set necessary to be the RMHA Secretary, it is my dedication to the Rocky Mountain Horse and its people, plus my broad range of experience that will prove invaluable to the Association. Thank you for your thoughtful consideration and support.

"Horses change lives. They give our young people confidence and self esteem. They provide peace and tranquility to troubled souls - they give us hope!"

~Toni Robinson

Cheryl Nyland - candidate for RMHA Member-at-Large



Cheryl & Cloud's Big John (BJ)

My experience with the Rocky Mountain Horse includes:

- RMHA member for over 12 years
- RMHA senior examiner
- RMHA magazine editor
- Active in the Michigan RMHC, serving as president or member-at-large for over 10 years.
- Served as show manager for five RMHA sanctioned-B shows in Michigan. I have attended/volunteered at several RMHA International Shows.
- I own two Rocky Mountain Horse geldings. I was first attracted to Rockies after first seeing a choc/flax beauty at a local horse show. After that, the color became of much less importance - it is the Rocky intelligence, versatility, comfortable gait, and human-friendly, FUN! Rocky personality that has kept me as an adoring fan.
- I enjoy trail riding, judged trail obstacle, showing, driving, and almost anything "horsey".

My goals as member-at-large :

- To help support continued improvement and expansion of programs for the membership. I would like to see more support for the regional clubs.
- To help protect the Rocky Mountain Horse and the qualities that make it the "perfect horse". This protection should include:
 - Continued education for the membership on the RMH breed standard, registry and showing.
 - Good show standards and good show judging.
 - Obtaining and providing the best genetics information available so both the RMHA board and membership can use the information wisely.
- To help the RMHA resolve and move beyond what I call "the great gait debate" – what a great day it will be when this stops holding the RMHA back. I will be honest so you can best judge whether I am your candidate – my past history of RMHA support and personal riding preference is for the "country trail pleasure" Rocky, but I am concerned that focusing on any single trait from a breeding perspective could endanger the many other great Rocky qualities. Past history and genetics research support this concern. It would be the ruin of the breed if we allow the extreme "BigLick" gait, but it could also be ruinous if we focus so much on a "daisy clipper" gait that we diminish the Rocky versatility or athleticism. I hope for a process that fosters positive discussion; involves and educates the RMHA membership in gait analysis and RMH genetics. From this process, we should see potential solutions.

My email address is: nylandc@sbcglobal.net. Thank you for your time and attention! Cheryl

Sharon Rogers, Hearing Panel



I am a candidate for the Hearing Panel position. I have been married to my husband Rick for over 29 years. We have two adult sons, Kyle and Casey, and two wonderful Grandchildren C.J. and Skylar. I have been a member for 15 years and an Examiner for 11 years. In the past I have been on the youth committee and Show Advisory committee and am currently on the Show Advisory Committee. All of my immediate family have been active in trail riding and showing. I am now hoping to instill my love and passion for the Rocky into my Grandchildren. I don't think that's going to be a hard sale!

I believe that our by-laws, rules, and certification process that are in place is adequate for the preservation of our horse.

If elected I will be a fair and consistent Hearing Panel member. I will examine both sides of issues. Every member will be treated equally. "Big" barns, "small" barns, amateurs, Amateur owned and Trained, trail riders, and the ones that just love to watch them, will be treated with the same amount of respect.

The RMHA in the last couple of years has enjoyed a revitalization that I am very excited about. I will do everything I can to maintain the positive momentum. I am also in a position to attend all meetings. I will also welcome any and all communication with the membership. I can be reached at home at 606-726-0225. My e-mail address is Sugarloafstables@windstream.net. I am also on Facebook under the name Sharon Fox Rogers.

Sincerely,

Sharon Rogers

Rea Swan, Director of Examiners

Our Association is now celebrating its 25th anniversary. It has been a pleasure and privilege to have worked with all those that have made this organization grow from just a few horses to a registry of over 19,000. My contribution was as founding president leading the Association through the first 10 years of its growth. I have also been a board member for all but 3 years of the RMHA's existence. This experience provides me with information on what works and what doesn't for the benefit of our members and horses. I am a farm girl. I grew up on a 500 acre cattle farm near Lexington Kentucky. I've been riding horses from infancy.. I don't remember when I had my first very own horse I was so young. I come from a family of horse people with one grandfather a jockey and trainer and the other raised and sold horses and mules. My father rehabilitated problem horses and rode. It is that background that gave me the education that I used to grow and develop the breed.

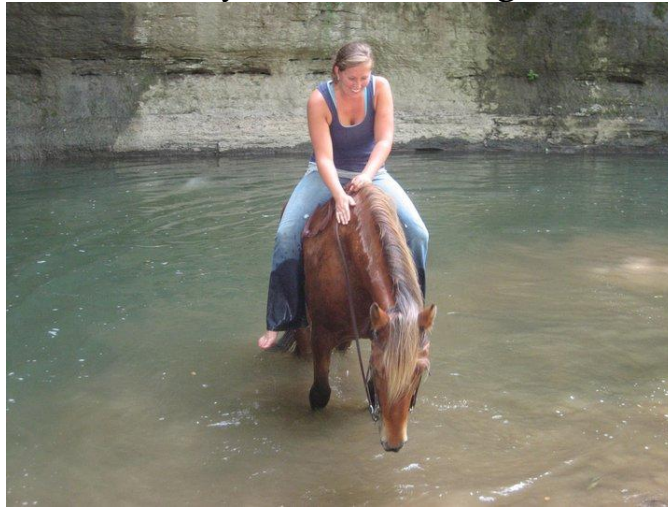


As we start on our second quarter century the Association still has much to do to meet the needs of all of the members. With the advances in technology we can make some real progress in expanding the Association's management from the tri-state area to being worldwide. I will make it a primary goal to initiate electronic attendance at board meetings by members at large so that we have a wider representation of the membership governing the Association.

As a director of examiners I will be responsible for training our examiners and provide continuing education for approved examiners to help them maintain their skills. This process does not have to involve great expense or cost. There are now electronic means of holding regular training sessions for any examiner, anywhere, anytime. I will see to it that the Association utilize that capacity to improve the quality, consistency and fairness of our examinations.

The membership today has inherited a wonderful horse from the members over the last 25 years. I feel a personal responsibility and would encourage the membership to consider it their responsibility to see that we hand to the next generation the same wonderful, calm, smooth, riding horse that we have today. As a director of examiners I will work to make that ideal a reality. I ask for your vote in the upcoming election.

Sara Tracy-Member at Large 2012



Hello to all my fellow Rocky Mountain Horse Lovers! My name is Sara Tracy and I am running for the position of member at large. I began my love affair with the Rocky Mountain Horse almost a decade ago when I acquired my first Rocky Mountain Horse, Chilli Red. He was a six month old red chocolate, flaxen mane and tail weanling and it was love at first sight. My experiences, both personal and professional, that will greatly benefit the RMHA are listed below.

Rocky Mountain Horse Experience:

- Raised and trained my own Rocky Mountain Horses as well as aided in the training process of many others.
- Competed with my own horses in the Rated Trail Program for two years.
- Shown my own horses at International for two years.
- Had the privilege to show a horse belonging to a fellow RMHA member at International.
- Had the privilege of meeting and riding with a wide variety of RMHA members in a wide variety of areas over the past nine years.

Professional experience:

- Currently-Locust Trace AgriScience Farm: Community Liaison (www.techcenters.fcps.net/locusttrace)
- Currently-The Lexington Commons: Project Coordinator (www.kylexingtoncommons.org)
- Past-University of Kentucky Equine Initiative: Intern
- Past-Rood and Riddle: Veterinary Technician
- Past-America's Uptown Hounds Luxury Resorts: Events Coordinator
- Past-Hagyard Davidson McGee: Hay Crew
- Past- Central Kentucky Riding for Hope: Volunteer

Through my professional work and by ANY event possible, I have gained experience with an extremely wide variety of breeds however the Rocky will always be first. Their superior gait and gentle temperament are to be celebrated, shared and preserved and this is what I aim to work towards if gifted with the honor of a board position in the RMHA. I cannot imagine my life without Rocky Mountain Horses and am ready to put my professional skills to work for the Association. I aim to preserve, promote and protect these amazing horses, I only hope you will allow me that opportunity. Thank you for your time and consideration.

Please feel free to contact me: Saraetracy@gmail.com